



Side massage.

### Safe.

Easier to load, easier to change, and safer to do both, our Bulk Bag Discharge Station has been engineered to reduce the risk of workplace accidents.

A full platform station, like ours, is always an all-around safer choice. The strong support provided by our steel frame is far superior to that of suspended bag design in which heavyweight bags hang by their straps—the first point of bag failure.

In addition, our Bulk Bag Discharge Station stands up to the most rigorous and demanding work environments because of its heavy duty construction (4" square structural steel framework) and heavy duty components.

### Efficient.

We've built-in several features that make our design more efficient than most in the marketplace.

#### Centered piston, two guide rods.

Our pneumatic massage system keeps product flowing smoothly. With a centered piston and paddle and two guide rods, our system ensures proper agitation and massaging, and even loading—without paddle bending and breaking. In addition, the paddles plane properly, due to the double guide rod system, and our pivoting bearings help minimize stress.

#### Oversized pneumatic cylinders.

Another design feature that keeps the product flowing smoothly is our large pneumatic cylinder massage system. Our 4" cylinders provide a 10" stroke, giving difficult-to-handle products the strong boost necessary to push material into the first critical path of flow.



#### Spring-loaded tensioning system.

As the bag empties, this system pulls the sides tight, to prevent "mushrooming" over the side of the platform.

#### Centralized systems and control.

We provide all control systems from our site. So you need not be concerned with the added costs or inconvenience of dealing with subcontractors. In addition, we can quickly and easily design customized software for your system.

### Economical.

Despite our numerous features and high quality, you'll find that Carolina Conveying's Bulk Bag Discharge Station is priced competitively. It is our philosophy that quality shouldn't be cost prohibitive. In fact, we base our strong customer relationships, in part, on providing a superior product at a reasonable price.

### Versatile.

With a modular, multi-tier design, our bulk bag system allows for change if your requirements change. For example, you can alter the system from fork truck-loaded to hoist-and-trolley-loaded. You can specify a variety of hopper designs and fit the system with various outlet options, including rotary valves, screw feeders, or conveyors. Other options include: loss-in-weight discharging, low profile platform for lower ceilings, and all stainless construction for foods, pharmaceuticals and other applications.



Bag tensioning.



## Carolina Conveying

### Specialists

in powder handling components and systems. We offer a very comprehensive range of products including Rotary Airlocks, IBC Systems, Diverter Valves, Silo Dischargers, Volumetric and Weighing Systems, Aero-mechanical Conveyors and Dense Phase Conveying Systems.

## Carolina Conveying

### Technology

product test facility with our complete range of machines allowing prospective clients to visit and witness trials. State-of-the-art CAD and manufacturing facilities for material handling systems.

## Carolina Conveying

### Design

products are always designed to suit your particular application and requirements.

## Carolina Conveying

### Philosophy

it is our company policy to supply customers with products which conform to the highest quality specifications, are fit for their intended purpose, and offer a wide range of support services including installation, commissioning and service contracts.



Bin Activators

Soliflo™ Dischargers

Solibin™ IBC Systems

Bulk Bag Systems

Rite Rate™ Feeders

Rite Weight™ Feeders

DiscAir™  
Aeromechanical  
Conveyors

Ni Hard Bends

Rotary Valves

Side Entry Rotary  
Valves

Blow Thru Rotary  
Valves

Double Dump Valves

Conveying Diverters



Carolina Conveying Inc.  
P.O. Box 1208, Beaverdam Industrial Park  
162 Great Oak Drive, Canton, NC 28716

Tel: (828) 235-1005 Fax: (828) 235-1006

www.carolinaconveying.com  
email: sales@carolinaconveying.com



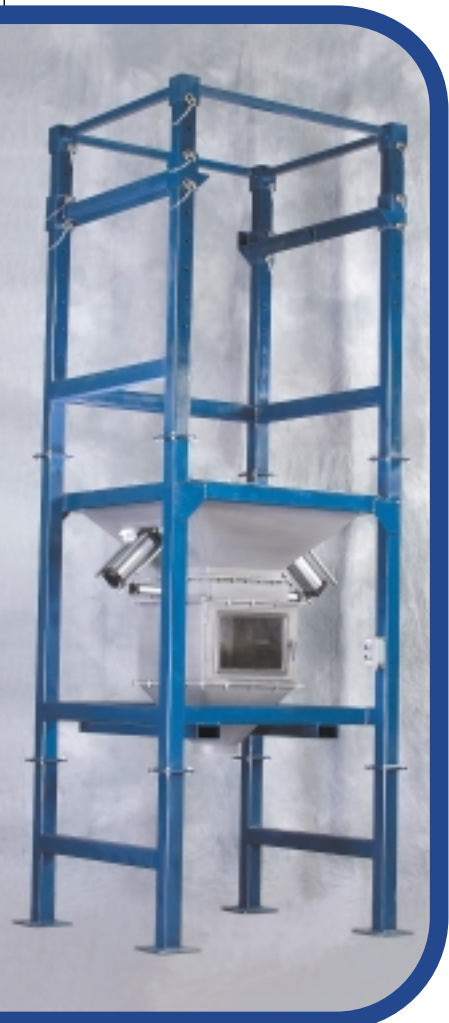
## Bulk Bag Discharge Station



the power  
in  
powders

## Bulk Bag Discharge Station

“better design  
and engineering  
at a better price.”



Our new Bulk Bag Discharge Station might change the way you work. And it will certainly change the way you think about bulk bag dischargers.

After a full year of research and development, we've designed a product that addresses many of your concerns and meets many of your day-to-day challenges.

With the creation of Carolina Conveying's new Bulk Bag Discharge Station, your bulk bag dispensing operation can now be—

- cleaner
- safer
- more efficient
- more economical
- more versatile

### Better powder handling, by design.

At Carolina Conveying, we want to help you keep your company running at full throttle and meeting profit projections. How can we accomplish this? By listening to you. By staying abreast of your needs and wants—and the new technology and ideas available to meet those needs. Once we discover customer and marketplace needs, we build your requirements and specifications into our products.

From valves to conveyors to discharge systems, we offer a fresh approach to powder handling. Our established team of experienced engineers, designers, researchers, and account associates knows the business inside and out. But our strategic focus is on engineering and design, not just marketing trends. It's our aim to channel our expertise and provide you with new ideas and innovative solutions.

Come to Carolina Conveying—and see how we put the power in powders.

### Clean.

You'll find our new Bulk Bag Discharge Station helps solve one of your most pressing and persistent bulk bag challenges—dust.

The Carolina Conveying Bulk Bag Discharge Station controls and contains dust four ways.

#### 1. Full platform design

This is your first line of defense against dust. The bag bottom seals tightly against the dish, so no dust escapes. Also, the product hopper is integrated to the dish, so the spout-to-hopper transition—the leading cause of dust problems—has been eliminated.

#### 2. Bag closure pinch bars

Our strong pinch bars completely seal off the bag while it is untied and the access door is closed.

#### 3. Larger access door

Roomy and convenient, this large 14" x 22" door, with side hinges, allows for easier movement, ensuring that workers can properly operate the unit in a way that will contain dust.

#### 4. Optional dust collection ring

A valuable addition, this ring allows a vacuum system to be connected directly to the top of the platform. In this way, dust can be swept away immediately as an empty bag is lifted.

#### 10" Massage Cylinder Stroke.

One of the biggest in the business. Powerfully pushes even difficult-to-handle materials into the first critical path of flow for easy and smooth discharge.



#### Large Access Door.

Larger than most, at 14" x 22". Allows easier movement; helps workers contain dust as they operate unit. Side hinges prevent door-jamming.

#### Dust Collection Ring.

Allows for vacuum system connection at the top of platform, to sweep dust away as empty bag is lifted. Optional.

#### 4" Square Tubing

Heavyweight, reinforced structural steel platform is the industry's toughest.

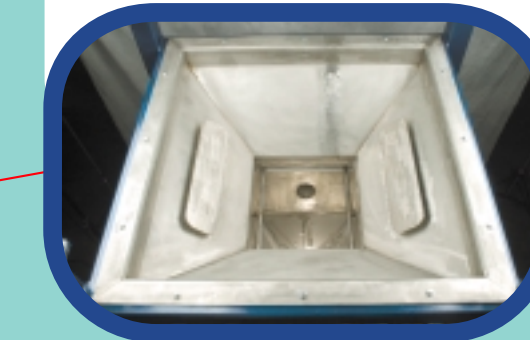
## Key Design Issues.

#### Modular Design.

Allows change when your needs change. Alter loading specifications. Customize it by specifying hopper design and outlet option. Or choose loss-in-weight measurement, low profile platform, or all-stainless construction.

#### Full Platform Design.

For safety and dust control. Full weight of bag is carried on platform and steel legs, instead of in the straps. Full weight of bag around entire perimeter of platform and bottom of bag provides an effective dust seal during discharge.



#### Centered Massage.

Keeps product moving smoothly and consistently. Agitates and massages bag with a centered piston and two guide rods to prevent uneven loading. Paddles always plane properly and won't bend or break. Pivoting bearings limit stress.

